

AEROPRO

Operating Instructions

Airless Spray Gun

3600psi (24.8Mpa) Maximum working pressure

Model: 818C

- 1) 4 Finger type lightweight spray gun with 517 reversible spray tip and guard.
- 2) 2 Finger type lightweight spray gun with 415 reversible spray tip and guard.



NOTICE

CLEAN IMMEDIATELY

Clean the Spray Gun IMMEDIATELY after use.

Delayed or inadequate cleaning will permanently clog the Spray Gun.



This manual contains important warnings and information. Read and Keep for reference.

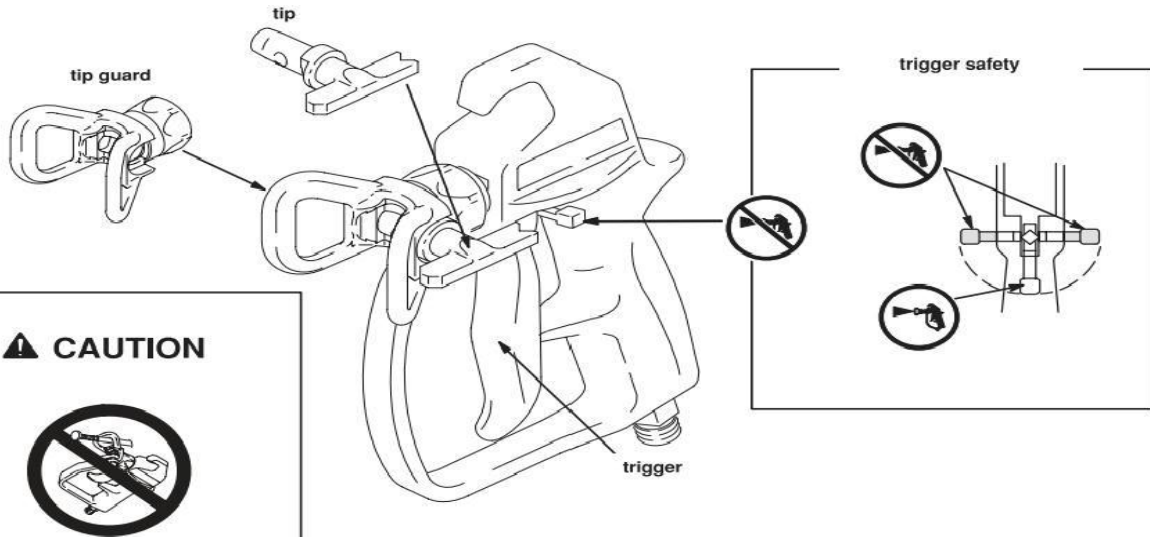
Technical Data:

Maximum working pressure	3600Psi(24.8Mpa,248Bar)	Inlet fitting	1/4"NPSM external thread
Operating temperature range	40° to 115° F(4°C to 46°C)	Internal strainer	60mesh
Weight	13.4oz(380g)	Wetted parts:	Plated steel nylon, aluminum, tungsten carbide, stainless steel, brass.

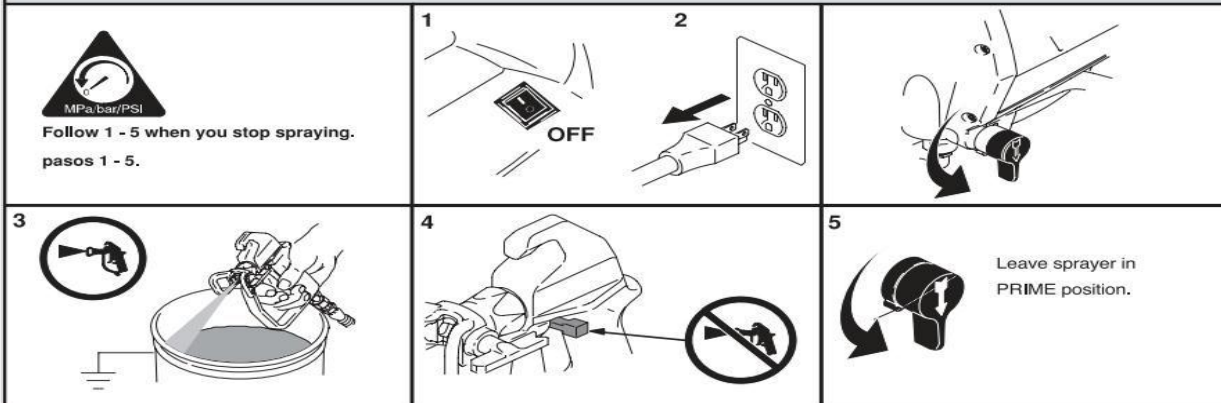
WARNING

	<p>FIRE AND EXPLOSION HAZARD Solvent and paint fumes can ignite or explode.</p> <p>To help prevent a fire or explosion</p> <ul style="list-style-type: none">• Use outdoors or in a well ventilated area• Avoid all ignition sources such as static electricity from plastic drop cloths, open flames such as pilot lights, hot objects such as cigarettes, and arcs from connecting or disconnecting power cords and turning light switches off or on.• Tape wall switches to prevent them from being turned off or on.• Use only or Graco airless paint hoses.• Ground sprayer, objects being sprayed, and paint/solvent pails.• Hold metal part of gun firmly to side of a grounded metal pail when triggering into pail• Do not use 1,1,1-Trichloroethane, methylene chloride other halogenated hydrocarbon solvents or fluids containing such solvents in this gun or any other pressurized aluminum equipment. Such use could result in a chemical reaction and an explosion.
	<p>FLUID INJECTION HAZARD High-pressure spray or leaks can inject fluid into the body. If high-pressure fluid pierces your skin, the injury might look like "just a cut," but it is a serious wound. Get immediate medical attention.</p> <p>To help prevent injection</p> <ul style="list-style-type: none">• Always put gun trigger safety in SAFETY ON position when not spraying.• Always relieve pressure before you check or repair leaks and when you stop spraying.• Never use components rated less than system <i>Maximum Working Pressure</i>.• Never allow children to use this gun.• Never point gun at yourself or anyone else.
	<p>FLUID SPLASHBACK HAZARD To avoid splashback of fluid while spraying, make sure the spray gun is assembled with the correct gasket for the fluid being sprayed. See Installing the Tip on page 4.</p> <p>RECOIL HAZARD Brace yourself. The gun may recoil when triggered.</p>

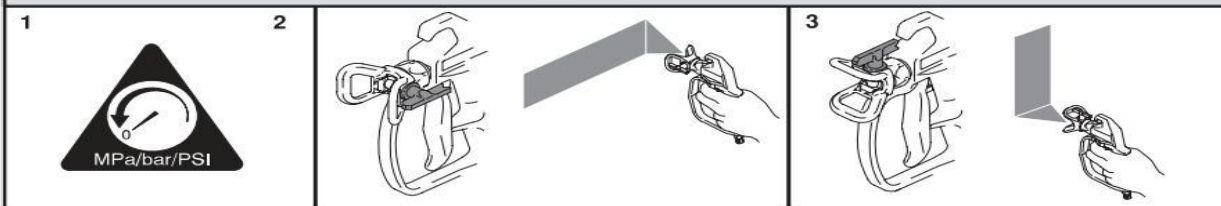
CONTROLS / CONTROLES / COMMANDES



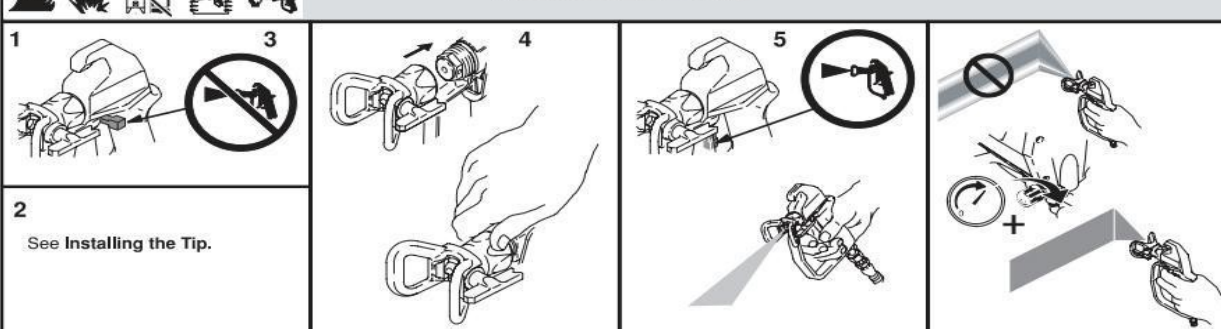
PRESSURE RELIEF



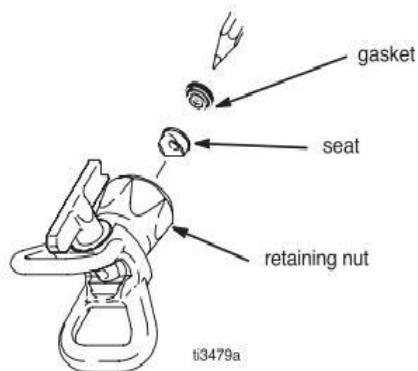
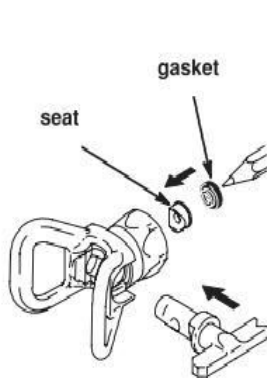
ALIGN SPRAY



ADJUST SPRAY



		CLEAR CLOG	
1			
2			
3			
4			
Installing the Tip			

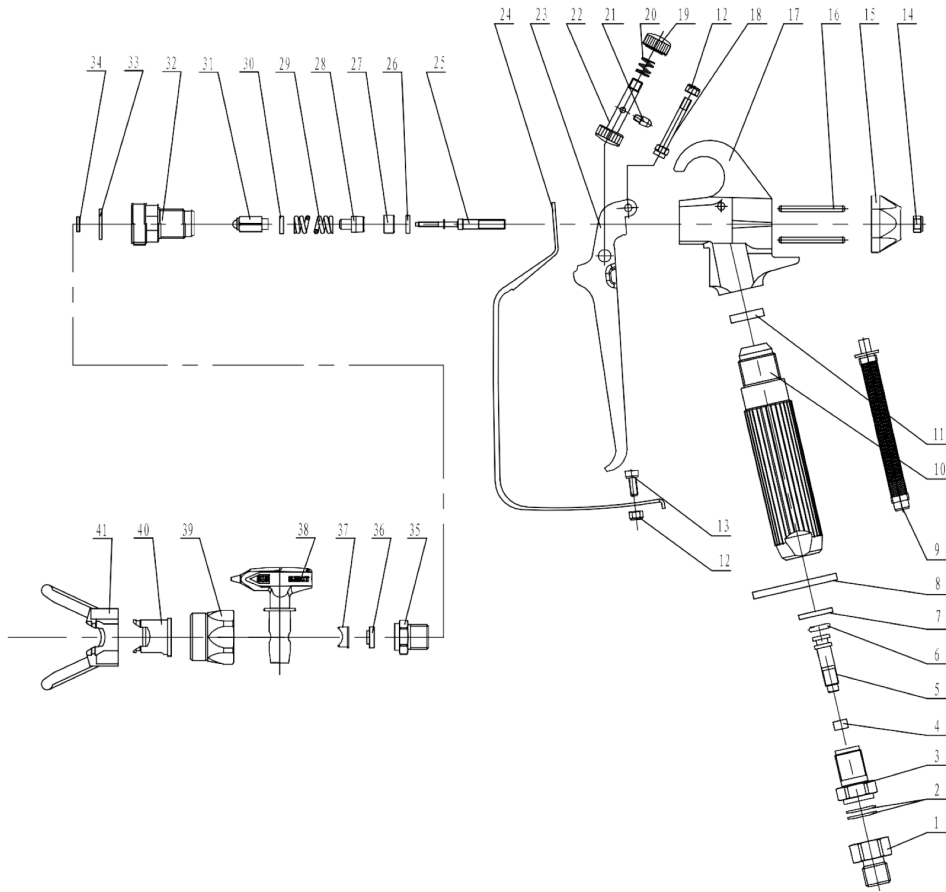


1. Orient seat so curved face matches tip cylinder profile.
2. Use pencil point to guide seat and gasket into retaining nut. Press seat and gasket into place.

		Changing Easy Access Filter	
1		2	Unscrew hose
3	Remove filter 	4	Insert filter

818 Airless Spray Gun

Parts list



No.	Figure number	Description	Qty.	No.	Figure number	Description	Qty.
01	03.01.01.018.056	Air inlet connection	1	22	03.01.01.018.039	Trigger pole	1
02	03.01.01.018.015	Washer	2	23	03.01.01.018.047-0	Trigger	1
03	03.01.01.041.002-01	Air inlet joint	1	24	03.01.01.041.007	Protect frame	1
04	03.01.01.041.006	Interval washer	1	25	03.01.01.018.005	Thimble	1
05	03.01.01.041.001-01	Air inlet connection core	1	26	03.01.01.018.008	Copper washer	1
06	03.05.01.248	O-ring 6*2	1	27	03.01.01.018.007	Thimble sealing washer	1
07	03.01.01.018.016	Connection plate washer	1	28	03.01.01.018.006	Spring core	1
08	03.01.01.018.037	Connection plate	1	29	03.01.01.018.004	Thimble spring	1
09	05.01.30.0475	Filter assembly	1	30	03.01.01.018.0054	Thimble head washer	1
10	03.01.01.018.068-01	Handle	1	31	05.01.48.17.001	Thimble head assembly	1
11	03.01.01.018.052	Washer	1	32	03.01.01.018.041	Plug	1
12	03.05.08.048	Locked nut M4	1	33	03.01.01.018.053	Washer	1
13	03.05.07.135	Bolt M4*10	1	34	03.01.01.018.086-01	Plug insert	1
14	03.05.08.039	Nut M5	1	35	03.01.01.018.009	Screw seat	1
15	03.01.01.018.040	Switch seat	1	36	03.01.01.018.044	Rubber plug	1
16	03.01.01.018.046	Switch pin	2	37	03.01.01.018.043	Seat	1
17	03.01.01.018.085-01	Gun body	1	38	03.01.01.018.093-02	Reversible Tip assembly	1
18	03.01.01.018.048	Trigger pin	1	39	03.01.01.018.042	Nut	1
19	03.01.01.018.050	Trigger pole joint	1	40	03.01.01.041.011	Tip seat	1
20	03.01.01.018.049	Spring	1	41	03.01.01.018.058	Tip Guard	1
21	03.01.01.018.051	Locating pin	1				